

FIONA BARRETT-CLARK

Quietly into the Night




24 JULY - 4 AUGUST 2019

Fiona Barrett-Clark is an emerging painter creating distinctively Australian, contemporary landscape paintings, which capture the ever-changing mood of the sky, sea and land, in an attempt to awaken people to the magnificence that passes us by every day.

Her paintings reflect the beauty of an uncomplicated, understated, Australian landscape, void of people, but not always human presence. In particular her focus is often on the sky, its kaleidoscope of colours, the clouds formations and the transformative effect it has on the land and sea.

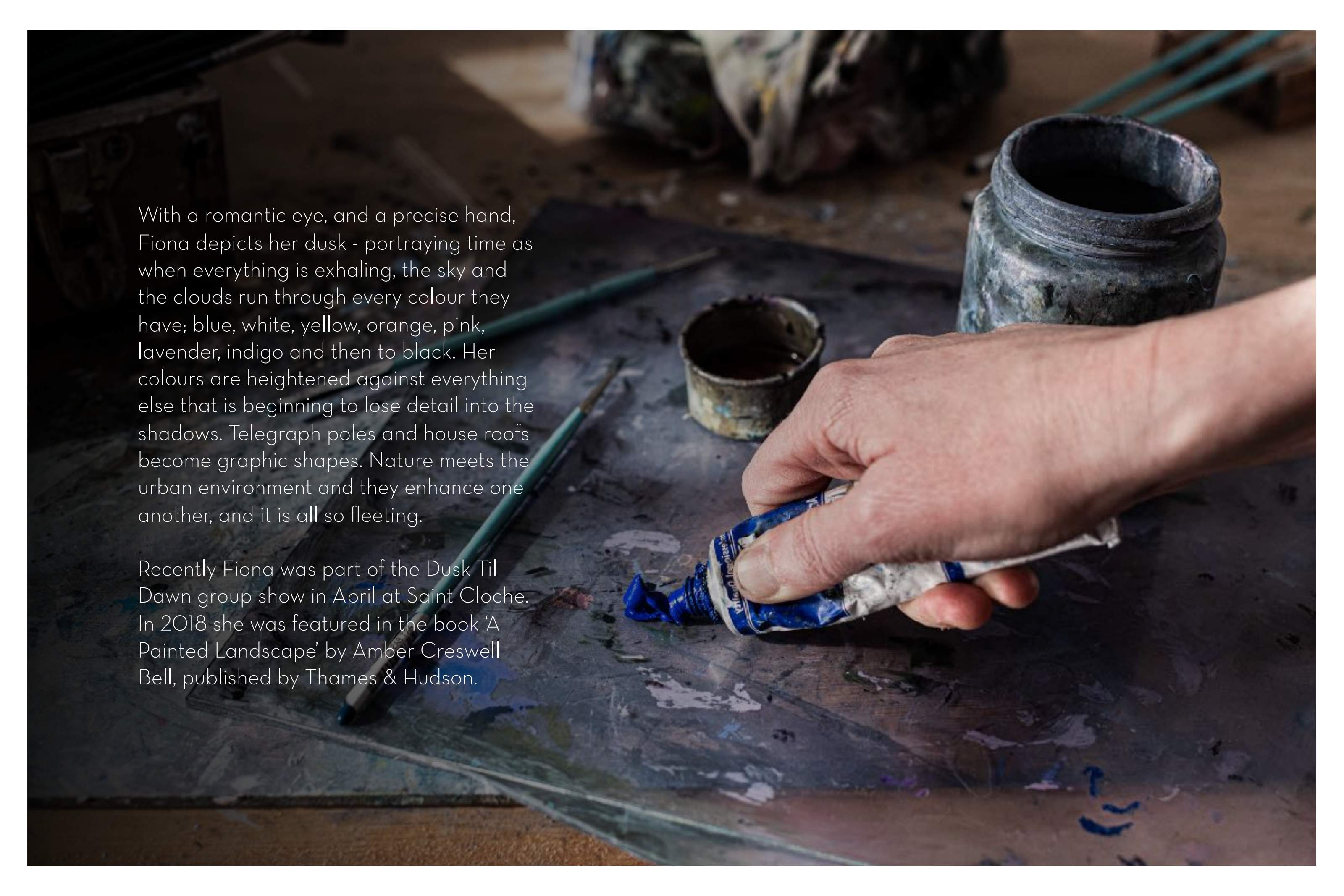




"I am a creature of the Sydney suburbs, this place where you live in 2 worlds, 5 minutes from one of Sydney's biggest CBD's and yet surrounded by vast vistas of gumtrees.

Late in the day, as the sun goes down, these worlds are at their most harmonious. The roads are slowly abandoned, and everything starts to become still and quiet, the pressure starts to dissipate and the cool air creeps in. Little squares of light start flickering, details are lost, and suburbs become more landscape and less urban.

This is the magic hour, when the sky is trying to hold onto the daylight and the earth slips quickly into the night. Daytime is blue or grey, the night is always black, but dusk is never the same, it is always beautiful, and we usually don't even notice it".



With a romantic eye, and a precise hand, Fiona depicts her dusk - portraying time as when everything is exhaling, the sky and the clouds run through every colour they have; blue, white, yellow, orange, pink, lavender, indigo and then to black. Her colours are heightened against everything else that is beginning to lose detail into the shadows. Telegraph poles and house roofs become graphic shapes. Nature meets the urban environment and they enhance one another, and it is all so fleeting.

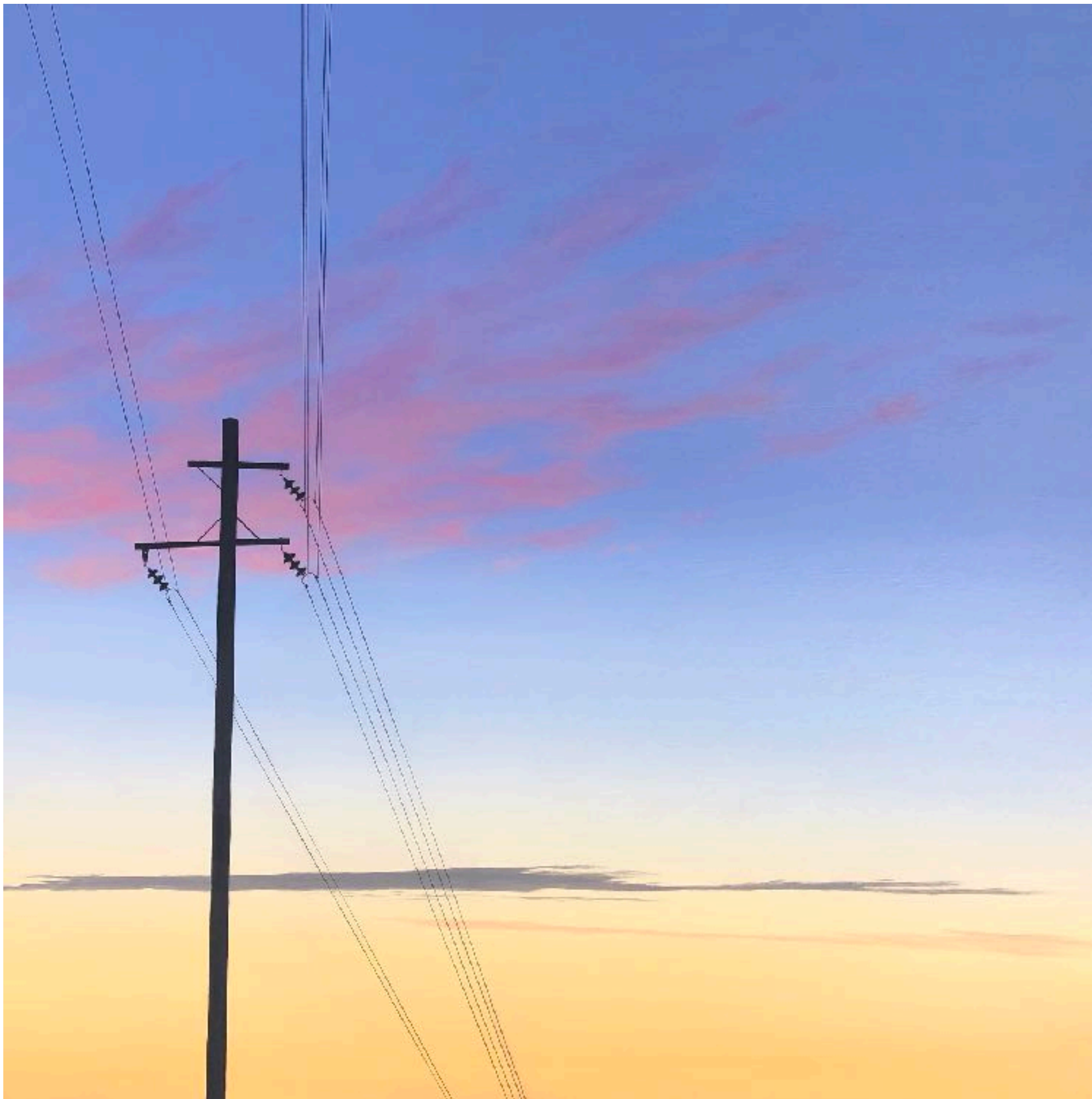
Recently Fiona was part of the Dusk Til Dawn group show in April at Saint Cloche. In 2018 she was featured in the book 'A Painted Landscape' by Amber Creswell Bell, published by Thames & Hudson.

Home Through the Playing Fields
Oil on plywood, black Tassie oak frame
83x83cm
\$2,400





Eerie
Oil on plywood, black Tassie oak frame
73x73cm
\$1,850



From the top of the Hill
Oil on plywood, black Tassie oak frame
73x73cm
\$1,850



Quietly into the Night
Oil on plywood, black Tassie oak frame
73x73cm
\$1,850

The Curtains are Drawn
Oil on plywood, black Tassie oak frame
63x63cm
\$,1,300





Against the Teal Sky
Oil on plywood, black Tassie oak frame
53x53cm
\$1,100

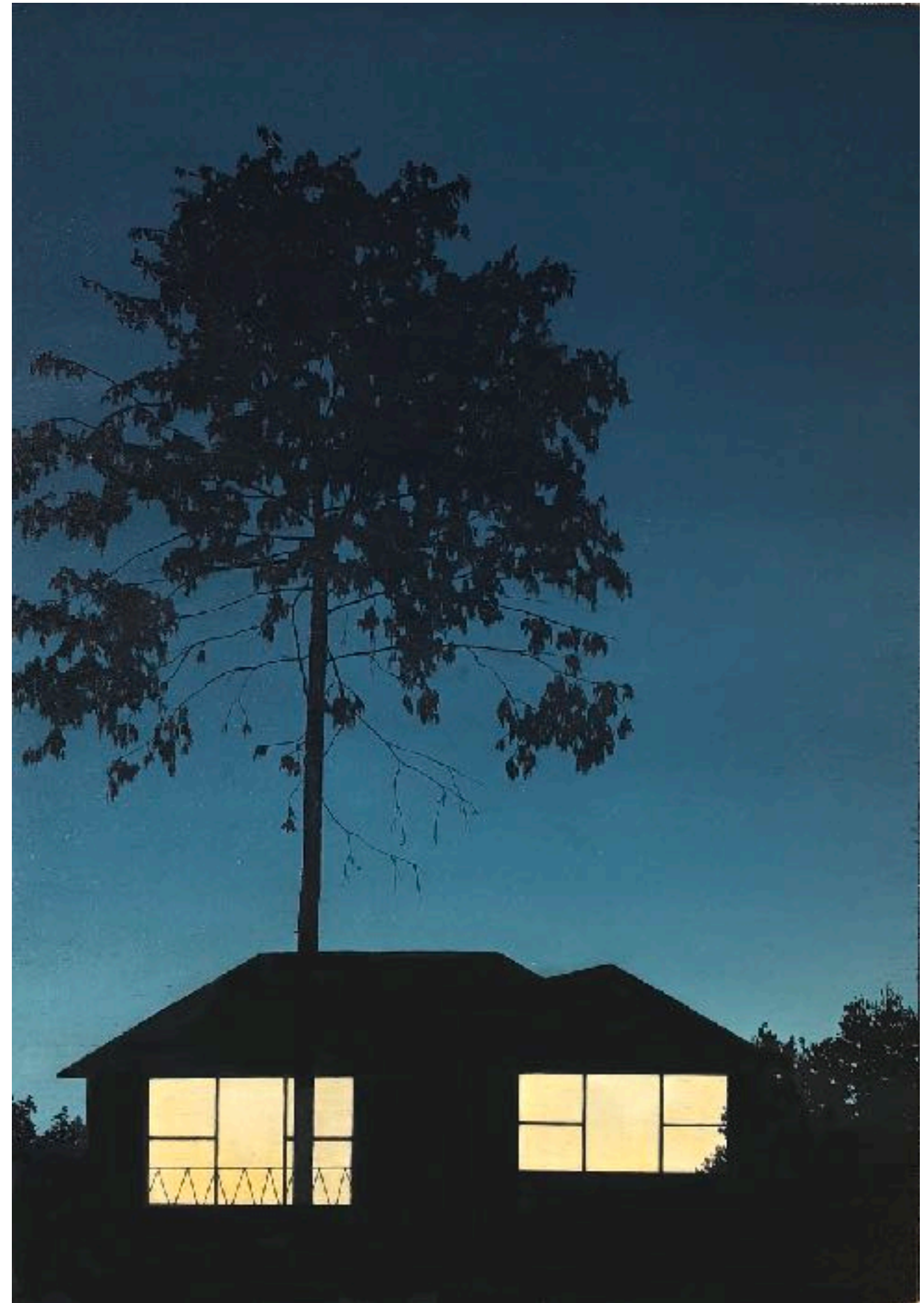


Awe
Oil on plywood, black Tassie oak frame
53x53cm
\$1,100



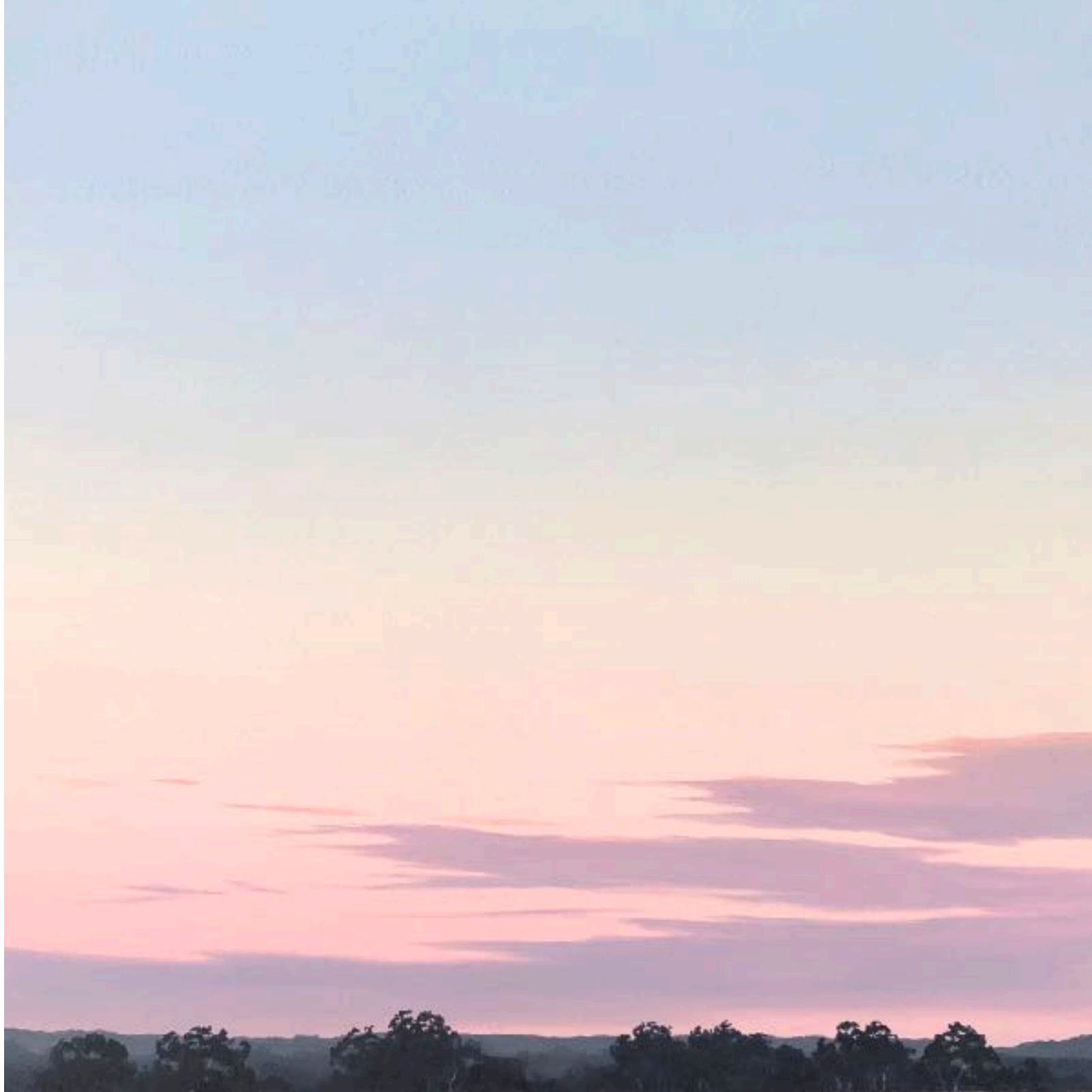
When the Clouds put on a Show
Oil on plywood, black Tassie oak frame
53x53cm
\$1,100

Little Boxes
Oil on plywood, black Tassie oak frame
58x38cm
\$900





Across the Suburbs I
Oil on plywood, black Tassie oak frame
43x43cm
\$850



Across the Suburbs II
Oil on plywood, black Tassie oak frame
43x43cm
\$850



Back Street Traffic
Oil on plywood, black Tassie oak frame
43x43cm
\$850



The Old Pine
Oil on plywood, black Tassie oak frame
43x43cm
\$850



Love or Loathe
Oil on plywood, black Tassie oak frame
33x33cm
\$700

And the Street Lights Come On
Oil on plywood, black Tassie oak frame
33x24cm
\$600

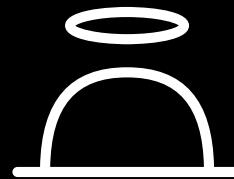




Deep Blue Sky
Oil on plywood, black Tassie oak frame
33x23cm
\$600



Photography: Samantha Mackie



SAINT CLOCHE

37 MACDONALD STREET PADDINGTON NSW

SAINTCLOCHE.COM